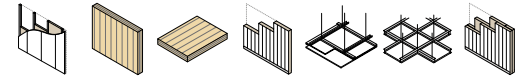


PANEL



PANEL WITH FIREPROOF COATING

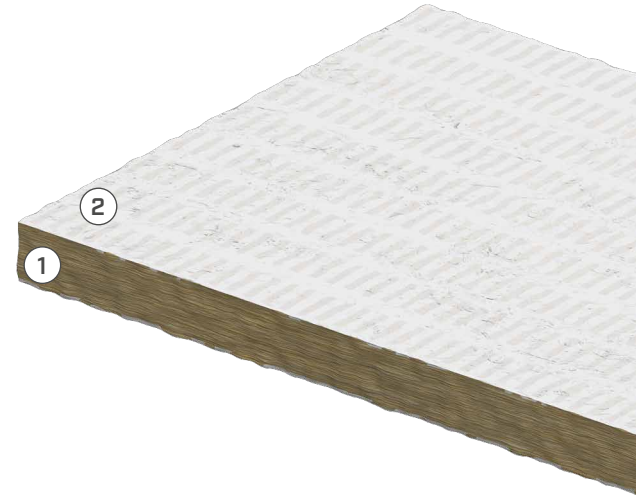


VERSATILE

The panel is suitable for a wide range of wall and floor penetrations and crossings. Ready to use, no additional surface coatings required.

LIGHT

Semi-rigid but extremely lightweight, the panel can be shaped directly on-site with a cutter. It is often used as a support on which to install other protective products such as SACCUS and COLLUM.



COMPOSITION

- ① rock wool
- ② white ablative paint

CODES AND DIMENSIONS

| CODE | B [mm] | s [mm] | L [mm] | B [in] | s [in] | L [in] | |
|----------|-----------|-----------|-----------|-----------|-----------|-----------|---|
| PANEL600 | 1200 | 50 | 600 | 47 1/4 | 2 | 23 5/8 | 5 |

TECHNICAL DATA

| Properties | value | USC units |
|---|-------------------------|-------------------------|
| Density | 150 kg/m ³ | 0,09 oz/in ³ |
| Specific weight | 0,22 kg/dm ³ | 0,12 oz/in ³ |
| Thermal conductivity λ | 0,04 W/m·K | 0,02 BTU/(h·ft·°F) |
| Fire resistance rating on CLT wall/floor ⁽¹⁾ | EI120 | - |

⁽¹⁾EN 1366-3 standard. For full details and tested configurations, please refer to the manual or contact our technical department for updates on new tests.

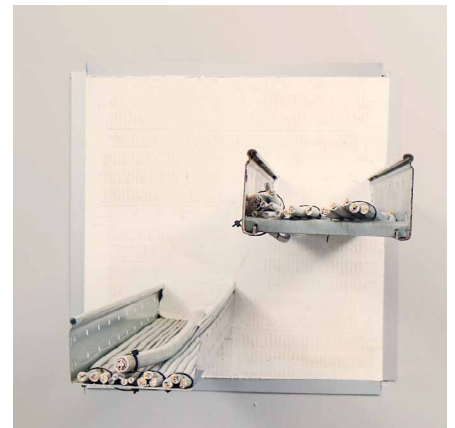
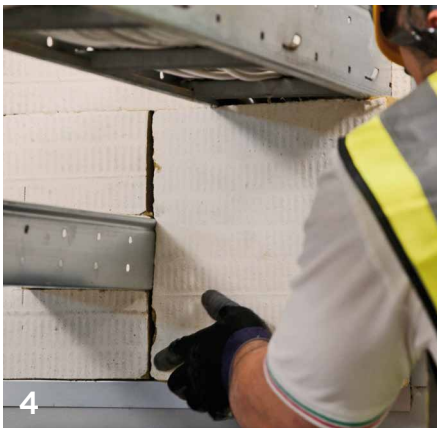
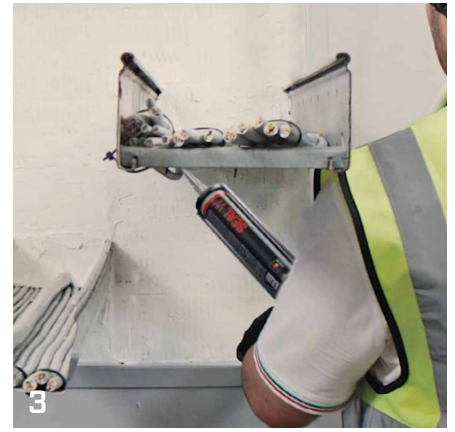
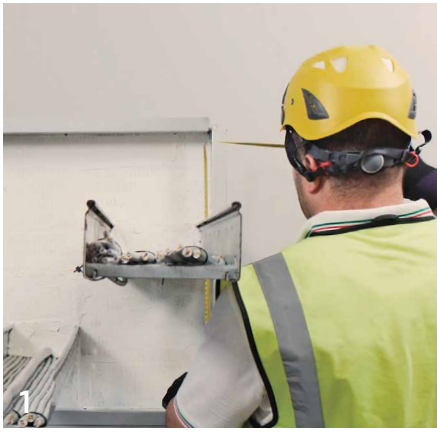
Waste classification (2014/955/EU): 17 06 04.



FIELDS OF APPLICATION

- cables in trays and corrugated tubes
- combustible pipes
- insulated and non-insulated metal pipes
- multilayer pipes
- mixed penetrations
- conduit penetrations
- expansion joints
- busbar

RECOMMENDATIONS FOR INSTALLATION

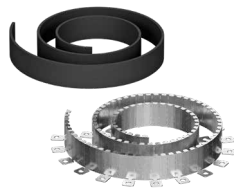


- 1 Measure the size and shape of the opening to be sealed and trace it on the panel
- 2 Cut the panel to size using a jigsaw or cutter, making the cut-out slightly larger than the size of the opening
- 3 Apply a small amount of sealant (SEAL W) on the sides of the cut-out or directly on the inside edge of the masonry where the cut-out will be positioned
- 4 Insert the cut-out in the opening, making sure it press fits
- 5 Level the joints with a spatula using some additional SEAL W sealant

RELATED PRODUCTS



SEAL W
page 324



UNICOLLUM
page 326



CUTTER
page 394