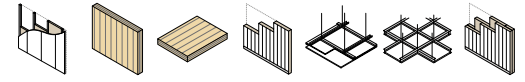


ROLL OF FIRESTOP COLLAR FOR MECHANICAL AND ELECTRICAL TECHNICAL PENETRATIONS



MODULAR

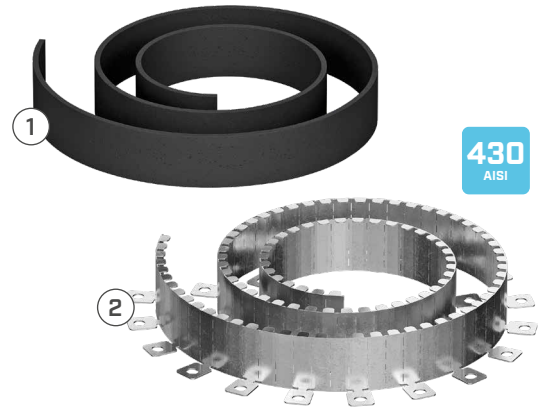
A universal solution, UNICOLLUM can be cut directly on-site and adapted to accommodate large diameters. It is certified for sealing mechanical and electrical penetrations in walls and ceilings.

VERSATILE PROTECTION

Featuring a stainless steel outer structure and a highly expansive intumescent strip, it provides protection for both wet environments and large elements.

COMPOSITION

- ① highly expansive "Firefill" intumescent material
- ② AISI 430 stainless steel (1.4016)



CODES AND DIMENSIONS

CODE	dimensions [mm]	dimensions [in]	
UNICOLLUM50	metal strip 3000 x 50 intumescent sheath 8600 x 50 x 4	metal strip 9' 10 1/8" x 2 intumescent sheath 28' 2 5/8" x 2 x 3/16	1

Possible diameters: from 30 to 315 mm, see INSTALLATION table on page 328.

TECHNICAL DATA

Properties	value	USC units
Free expansion	> 20:1	-
Activation temperature	180 °C	356 °F
Fire resistance rating on CLT wall/floor ⁽¹⁾	EI120	-

⁽¹⁾EN 1366-3 standard. For full details and tested configurations, please refer to the manual or contact our technical department for updates on new tests. The product remains stable when stored under normal conditions.

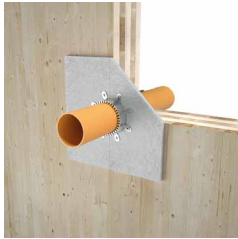









Waste classification (2014/955/EU): 19 10 01 (foil) | 07 02 13 (sheath).





FIELDS OF APPLICATION

- bundles of electrical cables, possibly in corrugated tubes
- combustible pipes, possibly in series
- multilayer pipes, possibly bundled
- insulated metal pipes
- mixed penetrations

FIELD OF APPLICATION

PLUMBING				
	combustible	insulated combustible	insulated multilayer	steel insulated
flush wall pipes				
non-flush wall pipes		-	-	-
flush floor pipes				
non-flush floor pipes		-	-	-

ELECTRICAL and TELECOMMUNICATIONS		
	in-wall wiring	in-floor wiring
flush combustible pipes		

FASTENERS

HBS

COUNTERSUNK
SCREW FOR WOOD



DWS

DRYWALL SCREW



Screw sizes must be determined based on the specific installation, see technical manual.

For more information, go to www.rothoblaas.com.

RELATED PRODUCTS

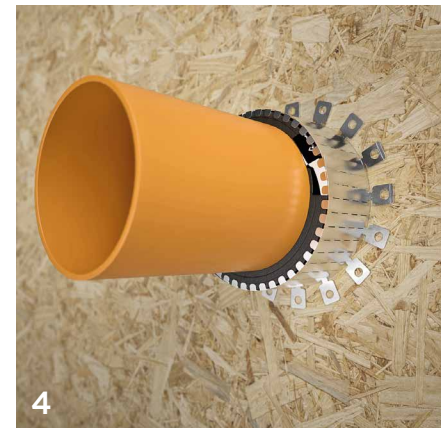
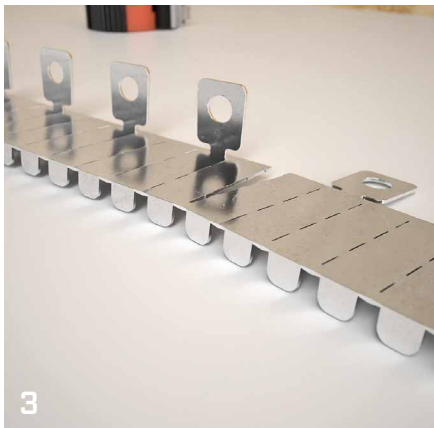


COLLUM
page 330



PANEL
page 340

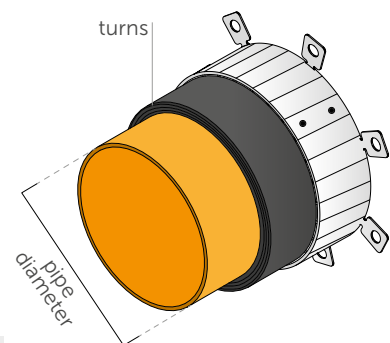
RECOMMENDATIONS FOR INSTALLATION



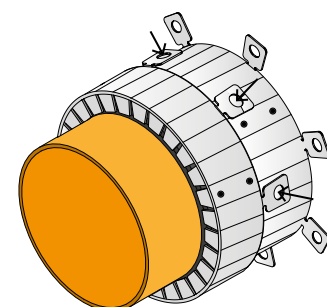
- 1 Measure the diameter of the pipe to be protected and cut the foil and sheath as indicated in the "INSTALLATION" table
- 2 Wrap the sheath around the pipe to be protected and secure with normal adhesive tape (FLEXI BAND)
- 3 Manually fold the metal foil, adapting it to the diameter of the pipe, and position the anchoring tabs outwards at 90°
- 4 Position the metal foil around the sheath with the ends overlapping by at least 30 mm
- 5 Then secure it with the supplied self-drilling screws (at least two per collar)
- 6 Fix the newly created collar with self-tapping screws (HBS or DWS) or metal expansion plugs depending on the support

INSTALLATION

diameter	F _{oil}	L _{sheath}	turns	possible collars	fastening points
[mm]	[mm]	[mm]	[no.]	[no.]	[no.]
30	200	240	2	15	4
40	230	310	2	13	4
50	260	380	2	11	4
63	300	460	2	10	4
80	350	560	2	8	4
90	380	620	2	7	4
100	410	680	2	7	4
110	440	750	2	6	4
125	515	1310	3	5	5
140	560	1450	3	5	5
160	620	1640	3	4	5
200(*)	795	3500	5	2	5
250(*)	955	4300	5	2	5
315(*)	1200	6430	6	1	5



1



2

(*)For combustible pipes with diameter 200, 250, 315 mm, 2 collars must be applied, as per figure 1 and 2. Attach the foil of the second collar to the first, placing the eyelets as shown in the figure and fasten with self-drilling screws.