

KKT COLOR A4 | AISI316

CONE-SHAPED CONCEALED HEAD SCREW

COLOR HEAD

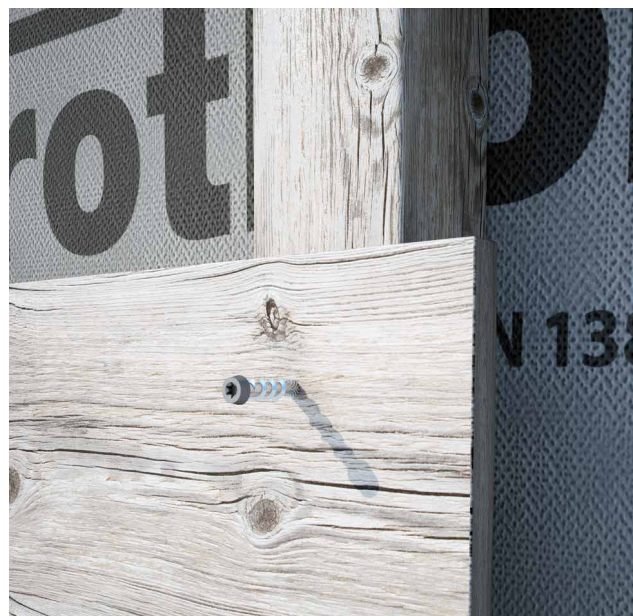
Version in A4 | AISI316 stainless steel with brown, grey or black colored head. Excellent camouflaging with wood. Ideal for very aggressive environments, for acidic, chemically treated wood and very high internal moisture (T5).

COUNTER THREAD

The inverse (left-hand) under-head thread guarantees excellent grip. Small conical head to ensure it is hidden in the timber.

TRIANGULAR BODY

The three-lobed thread makes it possible to cut the wood grain during screwing. Exceptional pull-through capacity.



DIAMETER [in]

0.14 0.21 0.32

LENGTH [in]

13/16 1 11/16 2 3/4 12 5/8

EXPOSURE CONDITION



ATMOSPHERIC CORROSIVITY

☐ C1 ☐ C2 ☐ C3 ☐ C4 ☐ C5

WOOD CORROSIVITY

☐ T1 ☐ T2 ☐ T3 ☐ T4 ☐ T5

MATERIAL

A4
AISI 316

A4 austenitic stainless steel | AISI316 (CRC III) with organic colored head coating




FIELDS OF USE


Outdoor use in highly aggressive environments. Wooden boards with density of $< 550 \text{ kg/m}^3$ [$G = 0.63$] (without pre-drill) and $< 880 \text{ kg/m}^3$ [$G = 1.05$] (with pre-drill). WPC boards (with pre-drill).

CODES AND DIMENSIONS


BROWN COLOR HEAD

	d_1 [mm] [in]	CODE	L		b		A	pcs
			[mm]	[in]	[mm]	[in]	[in]	
		KKT540A4M	43	1 11/16	25	1	1/4	200
5,1 0.21 #11 TX 20		KKT550A4M	53	2 1/16	35	1 3/8	3/4	200
		KKT560A4M	60	2 3/8	40	1 9/16	1	200
		KKT570A4M	70	2 3/4	50	1 15/16	1	100

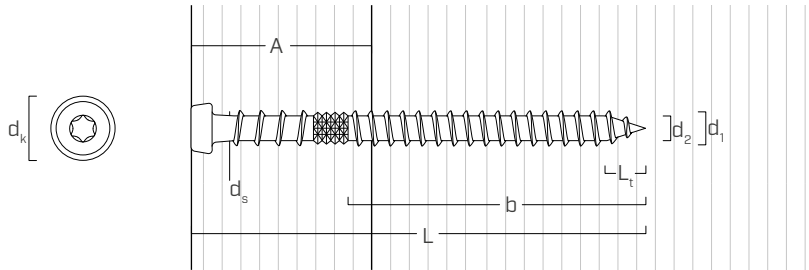
BLACK COLOR HEAD

	d_1 [mm] [in]	CODE	L		b		A	pcs
			[mm]	[in]	[mm]	[in]	[in]	
		KKT550A4N	53	2 1/16	35	1 3/8	3/4	200
5,1 0.21 #11 TX 20		KKT560A4N	60	2 3/8	40	1 9/16	1	200

GREY COLOR HEAD

	d_1 [mm] [in]	CODE	L		b		A	pcs
			[mm]	[in]	[mm]	[in]	[in]	
5,1 0.21 #11 TX 20		KKT550A4G	53	2 1/16	35	1 3/8	3/4	200
		KKT560A4G	60	2 3/8	40	1 9/16	1	200

GEOMETRY



Nominal diameter	d_1	[in] ⁽¹⁾	0.21
		[mm]	5,1
Outer thread diameter	d_1	[in]	0.201
Head diameter	d_k	[in]	0.266
Root diameter	d_2	[in]	0.134
Shank diameter	d_s	[in]	0.159
Tip length	L_t	[in]	0.201
Pre-drilling hole diameter ⁽²⁾	d_v	[in]	1/8 - 9/64

⁽¹⁾The nominal diameter of the screw is converted into imperial units and rounded up to the nearest decimal point.

⁽²⁾For high density materials, pre-drilled holes are recommended based on the wood species.

CARBONIZED WOOD

Ideal for fastening wooden planks with a burnt effect. Can also be used with acetylate-treated woods.

