

KKT COLOR A4 | AISI316

CONE-SHAPED CONCEALED HEAD SCREW

COLOR HEAD

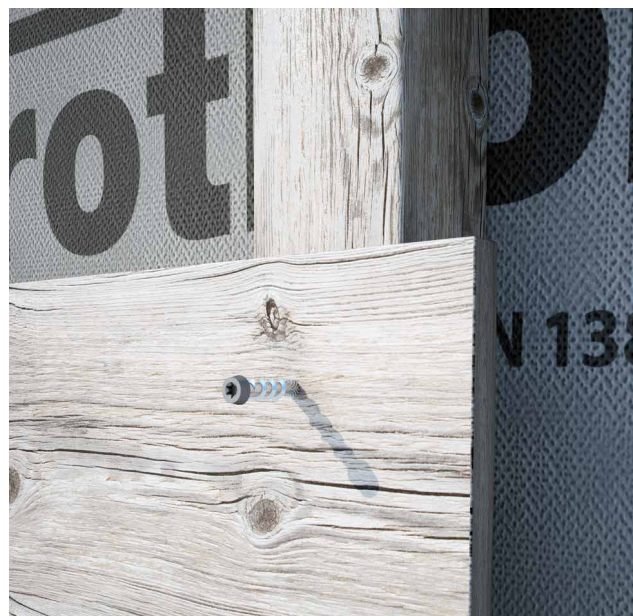
Version in A4 | AISI316 stainless steel with brown, grey or black colored head. Excellent camouflaging with wood. Ideal for very aggressive environments, for acidic, chemically treated wood and very high internal moisture (T5).

COUNTER THREAD

The inverse (left-hand) under-head thread guarantees excellent grip. Small conical head to ensure it is hidden in the timber.

TRIANGULAR BODY

The three-lobed thread makes it possible to cut the wood grain during screwing. Exceptional pull-through capacity.



DIAMETER [in]

0.14 0.21 0.32

LENGTH [in]

13/16 1 11/16 2 3/4 12 5/8

EXPOSURE CONDITION



ATMOSPHERIC CORROSIVITY

☐ C1 ☐ C2 ☐ C3 ☐ C4 ☐ C5

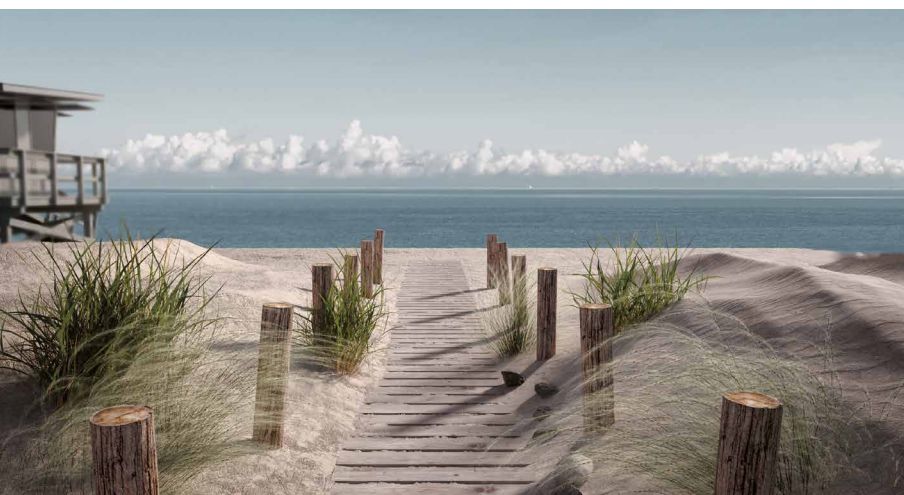
WOOD CORROSIVITY

☐ T1 ☐ T2 ☐ T3 ☐ T4 ☐ T5

MATERIAL

A4
AISI 316

A4 austenitic stainless steel | AISI316 (CRC III) with organic colored head coating




FIELDS OF USE

Outdoor use in highly aggressive environments. Wooden boards with density of $< 550 \text{ kg/m}^3$ [$G = 0.63$] (without pre-drill) and $< 880 \text{ kg/m}^3$ [$G = 1.05$] (with pre-drill). WPC boards (with pre-drill).


CODES AND DIMENSIONS

BROWN COLOR HEAD




d ₁ [mm] [in]	CODE	L		b		A	pcs
		[mm]	[in]	[mm]	[in]	[in]	
5,1 0.21 #11 TX 20	KKT540A4M	43	1 11/16	25	1	1/4	200
	KKT550A4M	53	2 1/16	35	1 3/8	3/4	200
	KKT560A4M	60	2 3/8	40	1 9/16	1	200
	KKT570A4M	70	2 3/4	50	1 15/16	1	100

BLACK COLOR HEAD



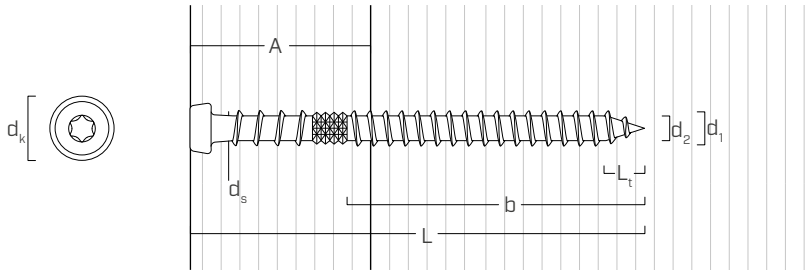
d ₁ [mm] [in]	CODE	L		b		A	pcs
		[mm]	[in]	[mm]	[in]	[in]	
5,1 0.21 #11 TX 20	KKT550A4N	53	2 1/16	35	1 3/8	3/4	200
	KKT560A4N	60	2 3/8	40	1 9/16	1	200

GREY COLOR HEAD



d ₁ [mm] [in]	CODE	L		b		A	pcs
		[mm]	[in]	[mm]	[in]	[in]	
5,1 0.21 #11 TX 20	KKT550A4G	53	2 1/16	35	1 3/8	3/4	200
	KKT560A4G	60	2 3/8	40	1 9/16	1	200

GEOMETRY



Nominal diameter	d ₁	[in] ⁽¹⁾	0.21
		[mm]	5,1
Outer thread diameter	d ₁	[in]	0.201
Head diameter	d _k	[in]	0.266
Root diameter	d ₂	[in]	0.134
Shank diameter	d _s	[in]	0.159
Tip length	L _t	[in]	0.201
Pre-drilling hole diameter ⁽²⁾	d _v	[in]	1/8 - 9/64

⁽¹⁾The nominal diameter of the screw is converted into imperial units and rounded up to the nearest decimal point.

⁽²⁾For high density materials, pre-drilled holes are recommended based on the wood species.

CARBONIZED WOOD

Ideal for fastening wooden planks with a burnt effect. Can also be used with acetylate-treated woods.

