

COACH SCREW DIN571

CE MARKING

Screws with the CE mark, in accordance with EN 14592.

HEXAGONAL HEAD

Appropriate for use on plates in steel-to-timber applications, thanks to its hexagonal head.

OUTDOOR VERSION

Also available in stainless steel A2 | AISI304 for outdoor use.



DIAMETER [in]	0.24	0.32	0.63
LENGTH [in]	1 9/16	1 15/16	15 3/4

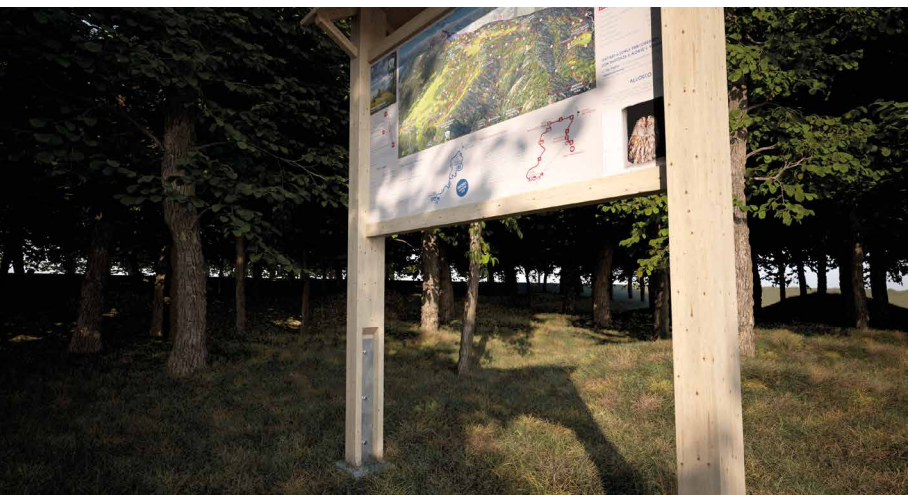
MATERIAL

Zn
ELECTRO PLATED
electrogalvanized carbon steel

- EC1
- DRY
- C2
- T3

A2
AISI 304
A2 | AISI304 austenitic stainless steel (CRC II)

- EC1
- EC2
- EC3
- WET
- C4
- T4



FIELDS OF USE

- timber based panels
- fibreboard and MDF panels
- solid timber
- glulam (Glued Laminated Timber)
- CLT, LVL

CODES AND DIMENSIONS

Zn
ELECTRO
PLATED

KOP

d ₁ [mm] [in]	CODE	L		pcs
		[mm]	[in]	
8 0.32 SW 13	KOP850(*)	50	1 15/16	100
	KOP860	60	2 3/8	100
	KOP870	70	2 3/4	100
	KOP880	80	3 1/8	100
	KOP8100	100	4	50
	KOP8120	120	4 3/4	50
	KOP8140	140	5 1/2	50
	KOP8160	160	6 1/4	50
	KOP8180	180	7 1/8	50
	KOP8200	200	8	50
10 0.40 SW 17	KOP1050(*)	50	1 15/16	50
	KOP1060(*)	60	2 3/8	50
	KOP1080	80	3 1/8	50
	KOP10100	100	4	50
	KOP10120	120	4 3/4	50
	KOP10140	140	5 1/2	50
	KOP10150	150	6	50
	KOP10160	160	6 1/4	50
	KOP10180	180	7 1/8	50
	KOP10200	200	8	50
12 0.48 SW 19	KOP10220	220	8 5/8	50
	KOP10240	240	9 1/2	50
	KOP10260	260	10 1/4	50
	KOP10280	280	11	50
	KOP10300	300	11 3/4	50
	KOP1250(*)	50	1 15/16	50
	KOP1260(*)	60	2 3/8	50
	KOP1270(*)	70	2 3/4	50
	KOP1280	80	3 1/8	50
	KOP1290	90	3 1/2	50
12 0.48 SW 19	KOP12100	100	4	25
	KOP12120	120	4 3/4	25
	KOP12140	140	5 1/2	25

d ₁ [mm] [in]	CODE	L		pcs
		[mm]	[in]	
12 0.48 SW 19	KOP12150	150	6	25
	KOP12160	160	6 1/4	25
	KOP12180	180	7 1/8	25
	KOP12200	200	8	25
	KOP12220	220	8 5/8	25
	KOP12240	240	9 1/2	25
	KOP12260	260	10 1/4	25
	KOP12280	280	11	25
	KOP12300	300	11 3/4	25
	KOP12320	320	12 5/8	25
16 0.63 SW 24	KOP12340	340	13 3/8	25
	KOP12360	360	14 1/4	25
	KOP12380	380	15	25
	KOP12400	400	15 3/4	25
	KOP1680(*)	80	3 1/8	25
	KOP16100(*)	100	4	25
	KOP16120	120	4 3/4	25
	KOP16140	140	5 1/2	25
	KOP16150	150	6	25
	KOP16160	160	6 1/4	25
16 0.63 SW 24	KOP16180	180	7 1/8	25
	KOP16200	200	8	25
	KOP16220	220	8 5/8	25
	KOP16240	240	9 1/2	25
	KOP16260	260	10 1/4	25
	KOP16280	280	11	25
	KOP16300	300	11 3/4	25
	KOP16320	320	12 5/8	25
	KOP16340	340	13 3/8	25
	KOP16360	360	14 1/4	25
16 0.63 SW 24	KOP16380	380	15	25
	KOP16400	400	15 3/4	25

(*)Not holding CE marking.

AI571 - A2 | AISI304

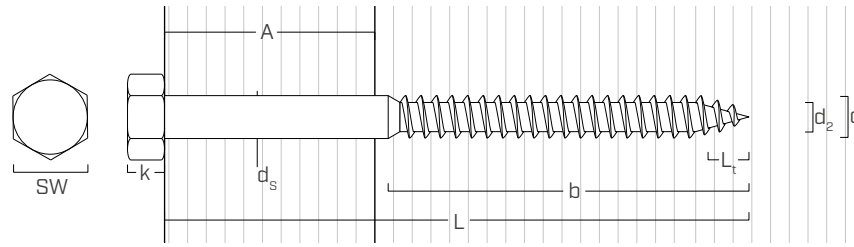
A2
AISI 304

d ₁ [mm] [in]	CODE	L		pcs
		[mm]	[in]	
8 0.32 SW 13	AI571850	50	1 15/16	100
	AI571860	60	2 3/8	100
	AI571880	80	3 1/8	100
	AI5718100	100	4	50
	AI5718120	120	4 3/4	50
	10 0.40 SW 17	AI5711050	50	1 15/16
AI5711060		60	2 3/8	50
AI5711080		80	3 1/8	50
AI57110100		100	4	50
AI57110120		120	4 3/4	50
AI57110140		140	5 1/2	50
AI57110160		160	6 1/4	50
AI57110180		180	7 1/8	50
AI57110200		200	8	50

d ₁ [mm] [in]	CODE	L		pcs
		[mm]	[in]	
12 0.48 SW 19	AI57112100	100	4	25
	AI57112120	120	4 3/4	25
	AI57112140	140	5 1/2	25
	AI57112160	160	6 1/4	25
	AI57112180	180	7 1/8	25

AI571 stainless steel screws are not CE marked.

GEOMETRY



Nominal diameter	d_1	[in] ⁽¹⁾	0.32	0.40	0.48	0.63
Outer thread diameter	d_1	[mm]	8	10	12	16
		[in]	0.315	0.394	0.472	0.630
Wrench size	SW	-	SW 13	SW 17	SW 19	SW 24
Head thickness	k	[in]	0.217	0.276	0.315	0.398
Shank diameter	d_s	[in]	0.315	0.394	0.472	0.630
Root diameter	d_2	[in]	0.220	0.276	0.354	0.472
Tip length	L_t	[in]	0.315	0.394	0.472	0.630
Pre-drilling hole diameter - smooth part ⁽²⁾	d_{v1}	[in]	5/16	25/64	15/32	5/8
Pre-drilling hole diameter - threaded part ⁽³⁾	d_{v2}	[in]	13/64	15/64	9/32	27/64
Thread length	b	[in]	$\geq 0,6 L$			

⁽¹⁾The nominal diameter of the screw is converted into imperial units and rounded up to the nearest decimal point.

⁽²⁾Pre-drilling for the shank applies to every wood species.

⁽³⁾Pre-drilling for the threaded part applies to every wood species.

Discover the complete range of **FASTENING** on our website or request the catalogue from your trusted agent.
www.rothoblaas.com

