

I PATROL + BLOCK

LIFELINE ON SUPPORT WITH BALLAST FOR FLAT ROOFS

WITHOUT DRILLING

It is designed for installation on flat roofs, and does not require to drill the roof covering, avoiding thermal bridging and preserving the waterproofing layer of the structure.

FLAT ROOFS

Designed for flat roofs with inclines up to 5° with PVC, TPO or bituminous final covering, with or without gravel.

SIMPLE

Concrete ballast slabs in standard sizes simplify the installation.

EN
795:2012
C

CEN/TS
18419:2013

UNI
11578:2015
C

PVC

TPO

BYTUM

MAXIMUM NUMBER
OF USERS



LOAD DIRECTION



TYPES OF
APPLICATION



SOFTWARE



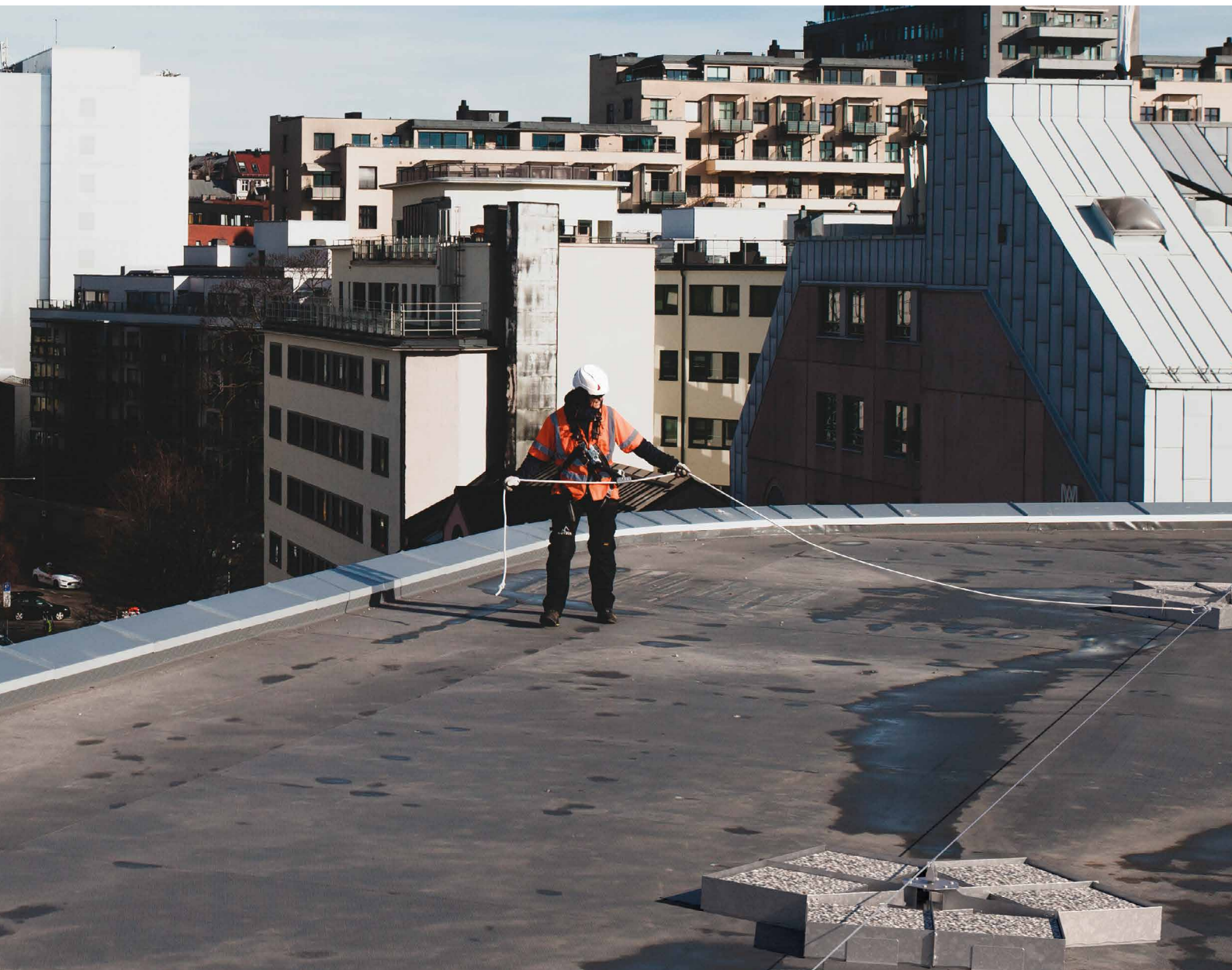
BIM



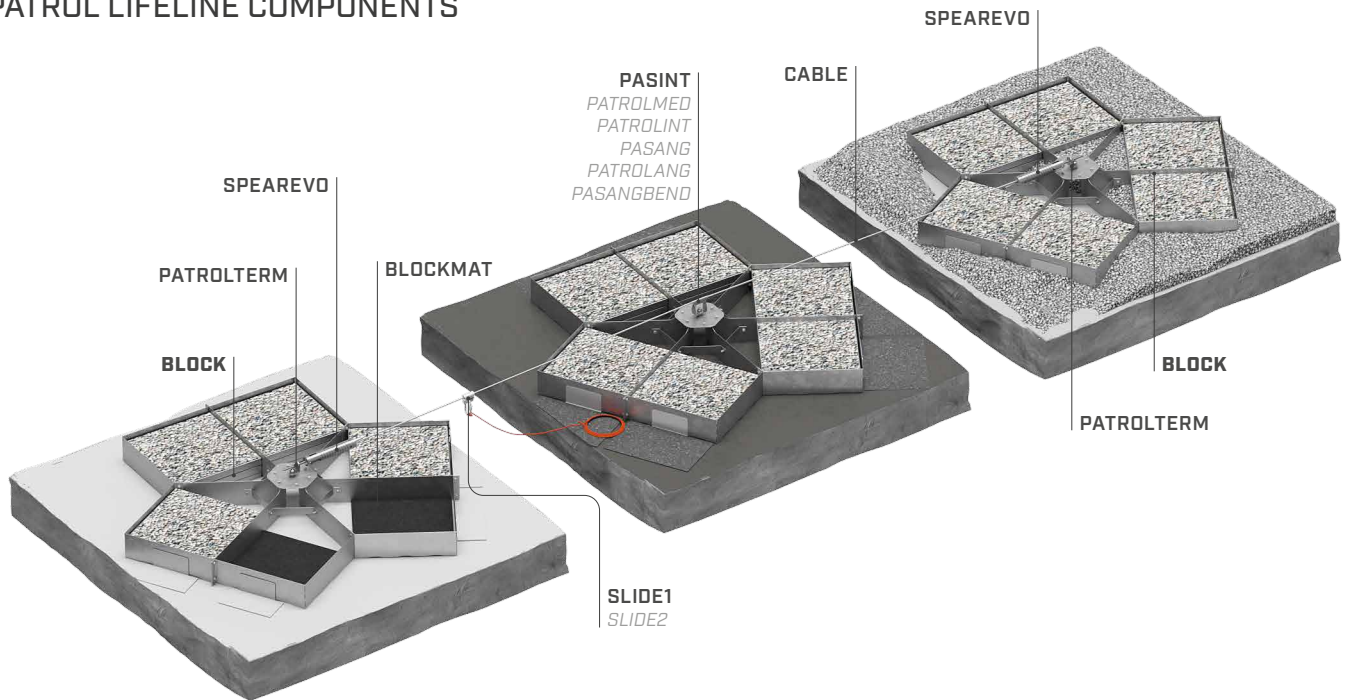
VIDEO



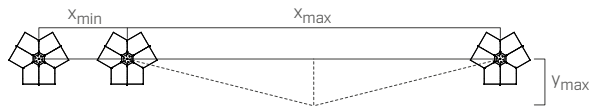
MANUALS



PATROL LIFELINE COMPONENTS



TECHNICAL DATA*



			SPEAREVO		
			EN 785:2012 C	CEN/TS 18415:2013	UNI 11578:2015 C
users		no.			
minimum span	x_{min}	[m]	2		
maximum span	x_{max}	[m]	10		
maximum deflection	y_{max}	[m]	2		

* The values indicated are the result of experimental tests carried out under the supervision of third parties in accordance with the standard referred to. For a correct calculation report with minimum distances according to the standard requirements, the substructure must be checked by a qualified engineer before installation.

BLOCK | CODES AND DIMENSIONS

CODE	material		B [mm] [in]	H [mm] [in]	L [mm] [in]	pcs	
BLOCK	AISI 304 stainless steel grade 1.4301		1870 73 5/8	165 6 1/2	1645 64 3/4	1	
BLOCKPLATE	AISI 304 stainless steel grade 1.4301		120 4 3/4	120 4 3/4	240 9 7/16	1	
BLOCKMAT							optional
ballast weight							18 bricks x 21,5 kg = 387 kg
total weight							400 kg

COMPLEMENTARY PRODUCTS

CODE	description	B [mm] [in]	L [mm] [in]	s [mm] [in]	pcs	
BLOCKMAT	BLOCKMAT mats not included in the supply of the BLOCK item (3 pieces per BLOCK are required) it can be ordered separately	550 21 5/8	1050 41 5/16	6 0.24	1	