

SELF-DRILLING TIMBER-TO-METAL SCREW

CERTIFIED

The SPP self-drilling screw is CE marked according to EN 14592. It is the ideal choice for professionals who demand quality, safety and reliable performance in structural timber-to-metal applications.

TIMBER-TO-METAL TIP


Special self-perforating tip with bleeder geometry for excellent drilling capacity both in aluminium (thickness: up to 3/8") and steel (thickness: up to 1/4").

CUTTING FINS

The fins protect the screw thread during timber pull-through. They guarantee maximum threading efficiency in metal and perfect adhesion between the thickness of the wood and the metal.

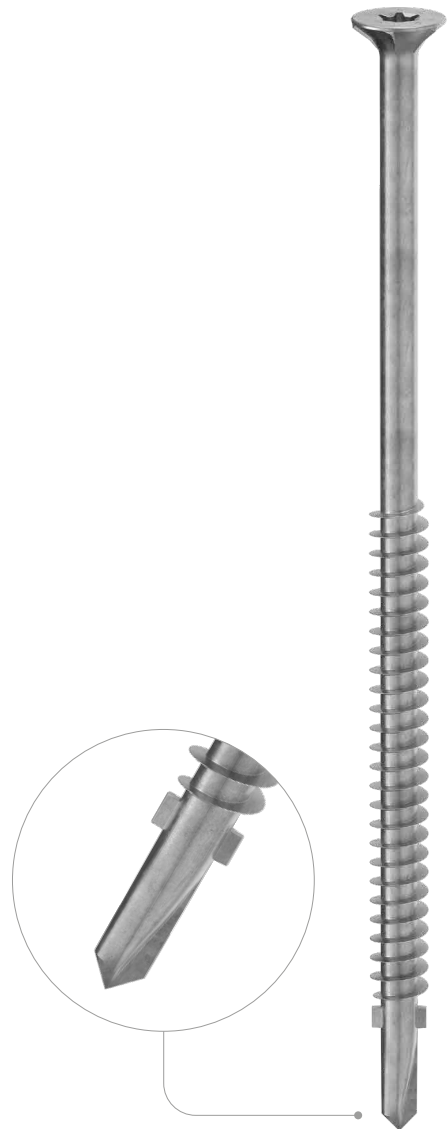
WIDE RANGE

Being partially threaded, it's ideal for fastening sandwich panels, even thick ones, to steel. Very sharp under-head ribs for a perfect surface finish on the wooden element.



BIT INCLUDED

DIAMETER [in]	0.14	<input type="radio"/> 0.25	0.32
LENGTH [in]	1	<input checked="" type="radio"/> 4 15/16	9 1/2
EXPOSURE CONDITION	<input checked="" type="radio"/> EC1	<input type="radio"/> DRY	
ATMOSPHERIC CORROSIVITY	<input checked="" type="radio"/> C1	<input type="radio"/> C2	
WOOD CORROSIVITY	<input checked="" type="radio"/> T1	<input type="radio"/> T2	
MATERIAL	<div> <div> Zn ELECTRO PLATED </div> <div> electrogalvanized carbon steel </div> </div>		



FIELDS OF USE

Direct fastening, without pre-drilling hole, of timber elements to metallic substructures:

- in S235 steel with a maximum thickness of 1/4"
- in aluminium with a maximum thickness of 3/8"

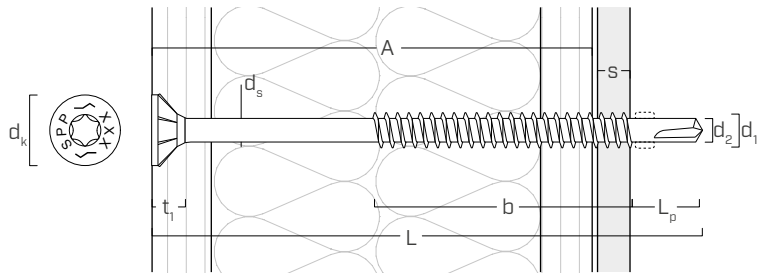
CODES AND DIMENSIONS

d ₁	CODE	L	b	A	s _s	s _A	pcs		
[mm] [in]		[mm] [in]	[mm] [in]	[in]	[in]	[in]			
6,3 0.25 #14 TX 30	SPP63125	125	4 15/16	60	2 3/8	3 3/4	1/4 - 5/16	5/16 - 3/8	100
	SPP63145	145	5 2/3	60	2 3/8	4 9/16	1/4 - 5/16	5/16 - 3/8	100
	SPP63165	165	6 1/2	60	2 3/8	5 3/8	1/4 - 5/16	5/16 - 3/8	100
	SPP63180	180	7 1/8	60	2 3/8	5 15/16	1/4 - 5/16	5/16 - 3/8	100
	SPP63200	200	8	60	2 3/8	6 3/4	1/4 - 5/16	5/16 - 3/8	100
	SPP63220	220	8 5/8	60	2 3/8	7 1/2	1/4 - 5/16	5/16 - 3/8	100
	SPP63240	240	9 1/2	60	2 3/8	8 5/16	1/4 - 5/16	5/16 - 3/8	100

s_s thickness that can be drilled, steel plate S235/St37

s_A thickness that can be drilled, aluminium plate

GEOMETRY



Nominal diameter	d ₁	[in] ⁽¹⁾	0.25
		[mm]	6,3
Outer thread diameter	d ₁	[in]	0.248
Head diameter	d _k	[in]	0.492
Root diameter	d ₂	[in]	0.191
Shank diameter	d _s	[in]	0.205
Head thickness	t ₁	[in]	0.209
Tip length	L _p	[in]	0.787

⁽¹⁾The nominal diameter of the screw is converted into imperial units and rounded up to the nearest decimal point.



SIP PANELS

The SPP is ideal for fastening SIP panels and sandwich panels thanks to the complete range of lengths (up to 9 1/2").