

# SAR

## SELF-DRILLING SCREW FOR STEEL, HEXAGONAL HEAD

### SELF-PERFORATING TIP

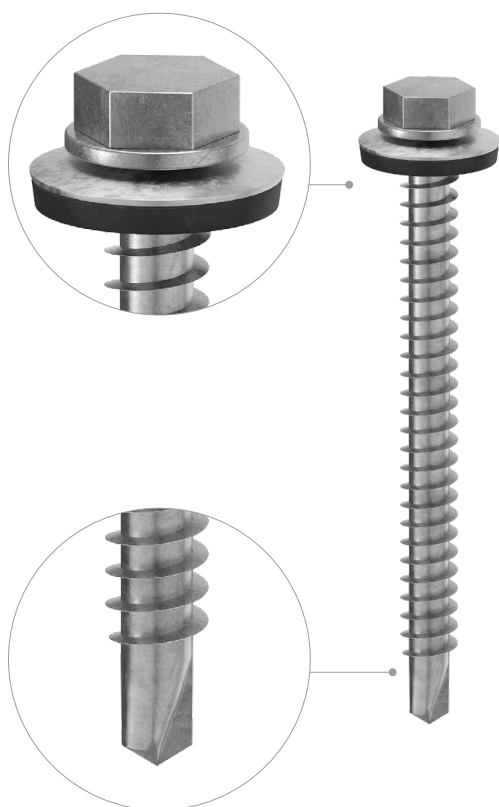
Self-perforating tip with bleeder geometry for excellent drilling capacity (up to 6 mm on steel).

### EFFECTIVE

Self-tapping thread for steel and hexagonal head with dummy washer SW 10.

### WATERTIGHT

Complete with integrated washer with EPDM seal for watertight fastening.



#### DIAMETER [mm]

3,5  8

#### LENGTH [mm]

25   240

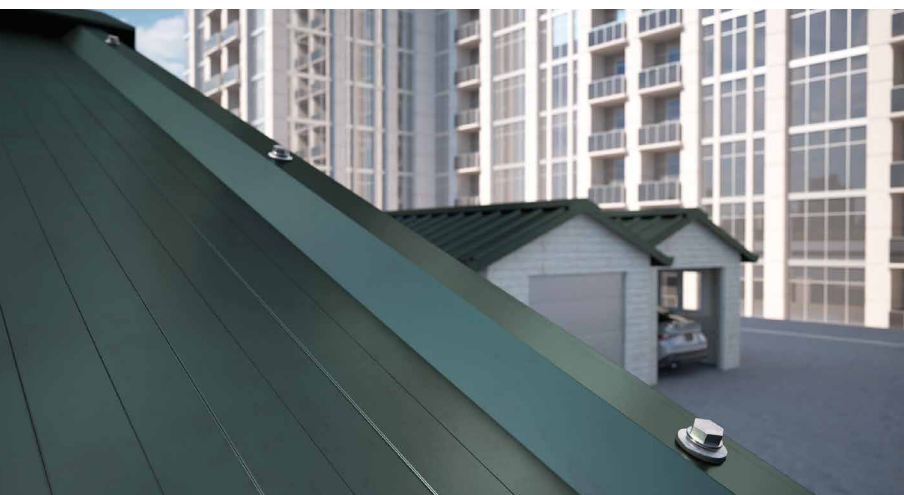
#### ATMOSPHERIC CORROSIVITY

☒ C1 ☒ C2

#### MATERIAL

**Zn**  
ELECTRO  
PLATED electrogalvanized carbon steel

**EPDM** EPDM gasket



## FIELDS OF USE

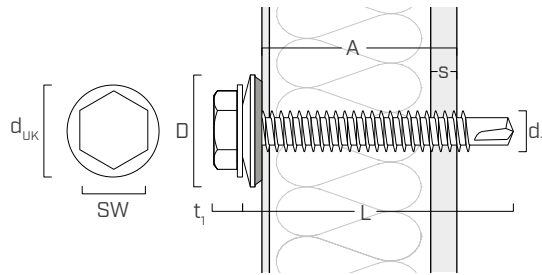
Direct fastening, without pre-drill hole, of metal structural elements and sheet metal to steel substructures maximum thickness 6,0 mm.

## CODES AND DIMENSIONS

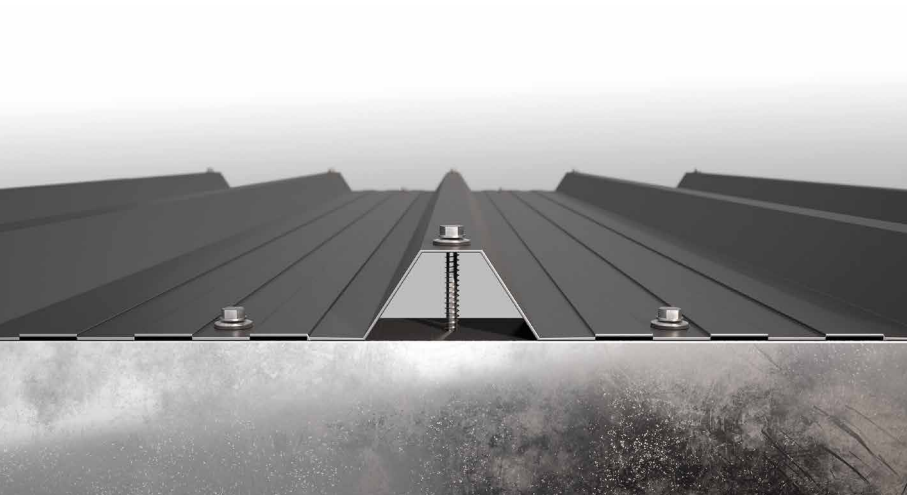
$d_1$ [mm]	$d_{UK}$ [mm]	CODE	L [mm]	A [mm]	s [mm]	pcs
6,3 SW 10	12,5	SAR6360	60	0 ÷ 47	2 ÷ 6	100
		SAR6370	70	14 ÷ 57	2 ÷ 6	100
		SAR6380	80	24 ÷ 67	2 ÷ 6	100
		SAR63100	100	44 ÷ 87	2 ÷ 6	100
		SAR63120	120	64 ÷ 107	2 ÷ 6	100
		SAR63140	140	84 ÷ 127	2 ÷ 6	100
		SAR63160	160	104 ÷ 147	2 ÷ 6	100
		SAR63180	180	124 ÷ 167	2 ÷ 6	100
		SAR63200	200	144 ÷ 187	2 ÷ 6	100

s thickness that can be drilled, metal plate (steel or aluminium)

## GEOMETRY



Nominal diameter	$d_1$	[mm]	6,3
Wrench size	SW	[mm]	SW 10
Head diameter	$d_{UK}$	[mm]	12,50
Diameter of washer	D	[mm]	15,70



### TRAPEZOIDAL METAL SHEET ROOFS

Thanks to its steel drilling capability and the watertightness of the combined washer, it is the ideal choice for application on trapezoidal sheet metal.